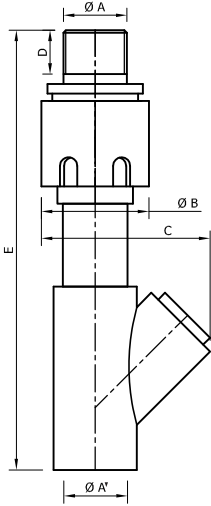


DÜŞEY ve YATAY RAKORLU DURDURUCULAR

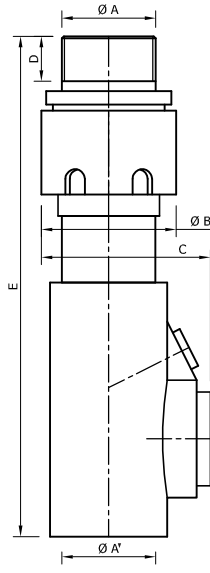
CONDUIT UNIONS WITH SEALS



UNYS

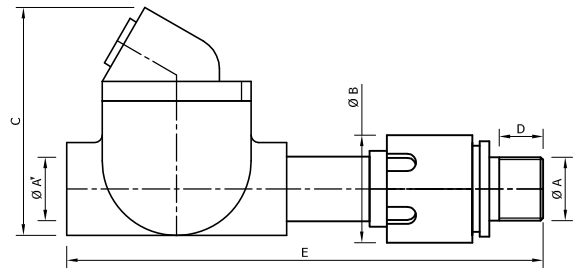


1, 2, 3, 4 için
For 1, 2, 3, 4



5, 6, 7, 8 için
For 5, 6, 7, 8

UNYZ



Gövde Tipi Body Type	Ağırlık (kg) Weight	Ölçüler Dimensions (mm)							
		ØA		ØA'		ØB	C	D	E
		NPT	METRIC	NPT	METRIC				
UNYS.1	0.18	1/2"	M20x1.5	1/2"	M20x1.5	38	60	18	175
UNYS.2	0.41	3/4"	M25x1.5	3/4"	M25x1.5	44	69	18	180
UNYS.3	0.50	1"	M32x1.5	1"	M32x1.5	52	87	23	217
UNYS.4	0.60	1 1/4"	M40x1.5	1 1/4"	M40x1.5	63	111	23	232
UNYS.5	0.70	1 1/2"	M50x1.5	1 1/2"	M50x1.5	69	87	23	256
UNYS.6	0.80	2"	M60x1.5	2"	M60x1.5	84	110	23	291
UNYS.7	0.90	2 1/2"	M75x1.5	2 1/2"	M75x2	108	142	25	350
UNYS.8	1.00	3"	M90x2	3"	M90x2.5	128	157	25	374

Malzeme/Material: Alüminyum ETIAL 140

Gövde Tipi Body Type	Ağırlık (kg) Weight	Ölçüler Dimensions (mm)							
		ØA		ØA'		ØB	C	D	E
		NPT	METRIC	NPT	METRIC				
UNYZ.1	0.76	1/2"	M20x1.5	1/2"	M20x1.5	38	93	18	145
UNYZ.2	0.82	3/4"	M25x1.5	3/4"	M25x1.5	44	93		195
UNYZ.3	1.00	1"	M32x1.5	1"	M32x1.5	52	103		237
UNYZ.4	1.50	1 1/4"	M40x1.5	1 1/4"	M40x1.5	63	107	23	267
UNYZ.5	2.00	1 1/2"	M50x1.5	1 1/2"	M50x1.5	69	122		291
UNYZ.6	2.50	2"	M60x1.5	2"	M60x1.5	84	132		303
UNYZ.7	3.50	2 1/2"	M75x1.5	2 1/2"	M75x1.5	108	164	25	360
UNYZ.8	4.50	3"	M90x2	3"	M90x2	128	180		388